



SHINING 3D®

EinScan-Pro™

Multi-functional
Handheld 3D Scanner





Scan Everything You Need on Your Hand

EinScan Pro can rapidly capture the 3D data of the real objects to the computer, including human body as well as freeform surface objects. Suggested size of objects scanned is 0.03-4m.

EinScan Pro is equipped with texture scan function, capable of capturing the full color 3D data of the object. EinScanPro adopts the ergonomic design. The weight is only 0.8kg, which is quite light and portable, also fit for long-time handheld 3D scan.

EinScan Pro delivers watertight 3D data available to 3D print or reverse engineering directly, meanwhile it can output the unclosed 3D model for reversal design.

Four scan options, versatile

Handheld rapid scan, Handheld HD scan, Automatic scan, and Free scan, which makes EinScan Pro be one multi functional 3D scanner, satisfies the needs for portable scan and high-accuracy scan.



▶ Handheld Rapid Scan



▶ Handheld HD Scan

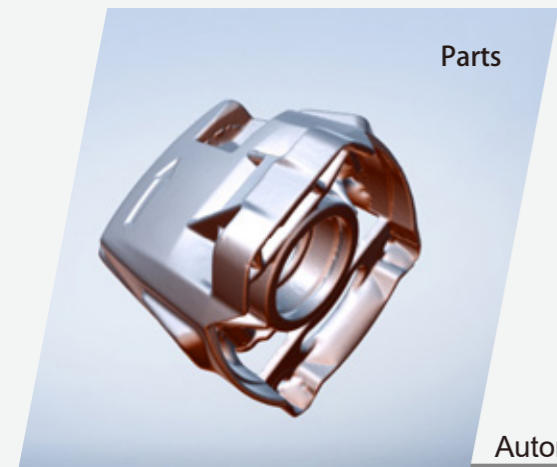
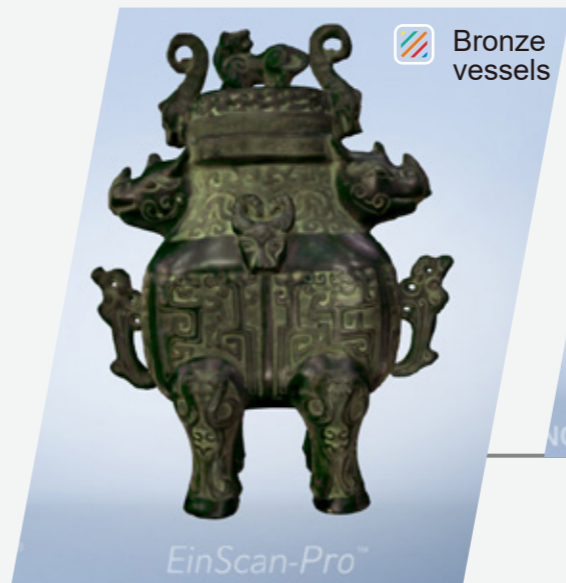
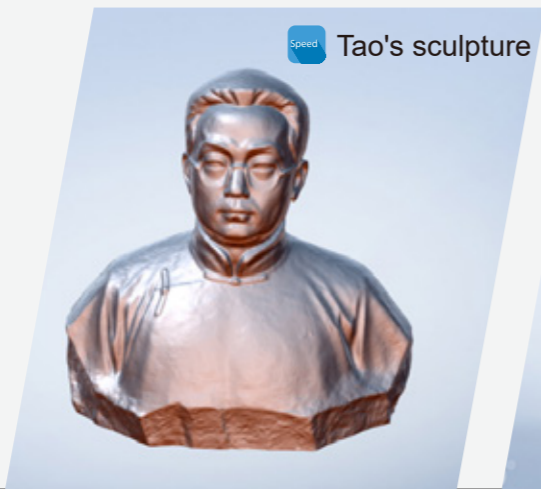


▶ Free Scan

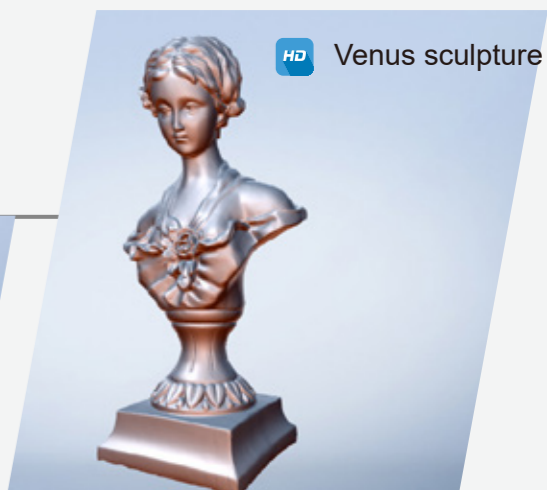


▶ Automatic Scan

Handheld Rapid Scan



Handheld HD Scan



Full Color Scan

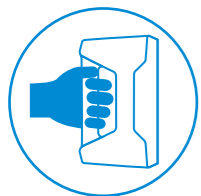
External texture camera can be attached to EinScan-Pro, capable of capturing the full-color 3D data of the object.



Color Texture

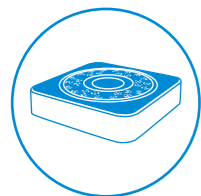


No Scan Limits



Handheld Scan

EinScan Pro is a multi functional handheld 3d scanner, satisfying the needs for portable scan and high-accuracy scan.



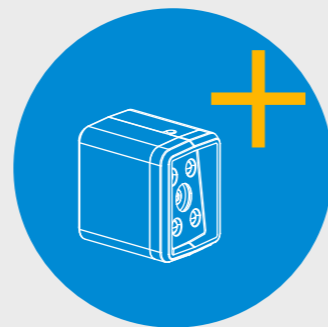
Automatic Scan

Automatic scan: matched with full-automatic table, the 360 degree scan takes only 1.5



Free Scan

Free scan: fix the scan head to the tripod to realize the free scan.



Color Scan supported in Handheld Rapid Scan, Automatic Scan, Free Scan.

The Application Covered



Computer Graphics



Research and Design



Heritage



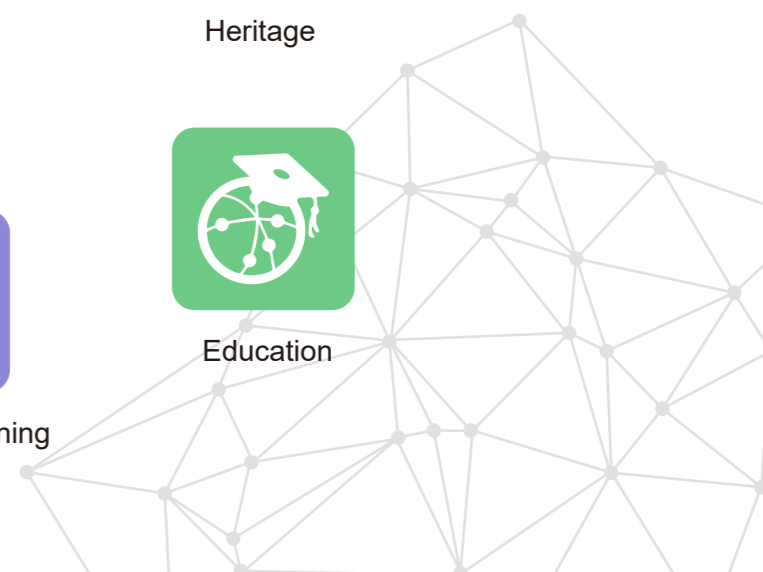
Art



Human 3D Scanning



Education





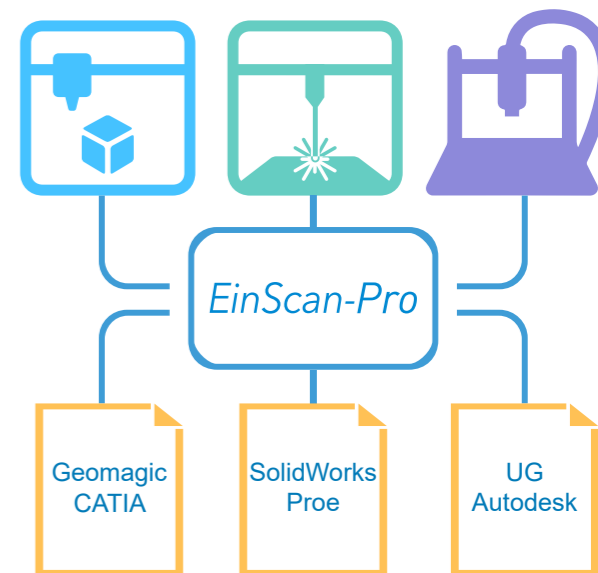
Explore EinScan-Pro!
You will love it.



High compatibility to 3rd party hardware and software.

Compatible Hardware: Desktop 3D printer, 3D laser engraving machine, color 3D printer, Freeform

Compatible software: MeshLab, 3D Systems (Geomagic® Solutions), InnovMetric, Software (PolyWorks), Dassault Systèmes (CATIA V5 and SolidWorks), PTC (Pro/ENGINEER), Siemens (NX and Solid Edge), Autodesk (Inventor, Alias, 3ds Max, Maya, Softimage, Meshmixer,).





All in one

Handheld rapid Scan, Handheld HD scan, Automatic scan, Free scan, multi-function in one 3D scanner.



Multi-applications

EinScan-Pro is a multi-functional handheld 3d scanner, it can be used to scan the industrial parts,



High Speed

In handheld scan mode, the scan speed is 10 frames/s. the Automatic scan and free scan mode single scan takes less than 2s.



Full color scan

External texture camera can be attached to EinScan-Pro, capable of capturing the full-color 3D data of the object.



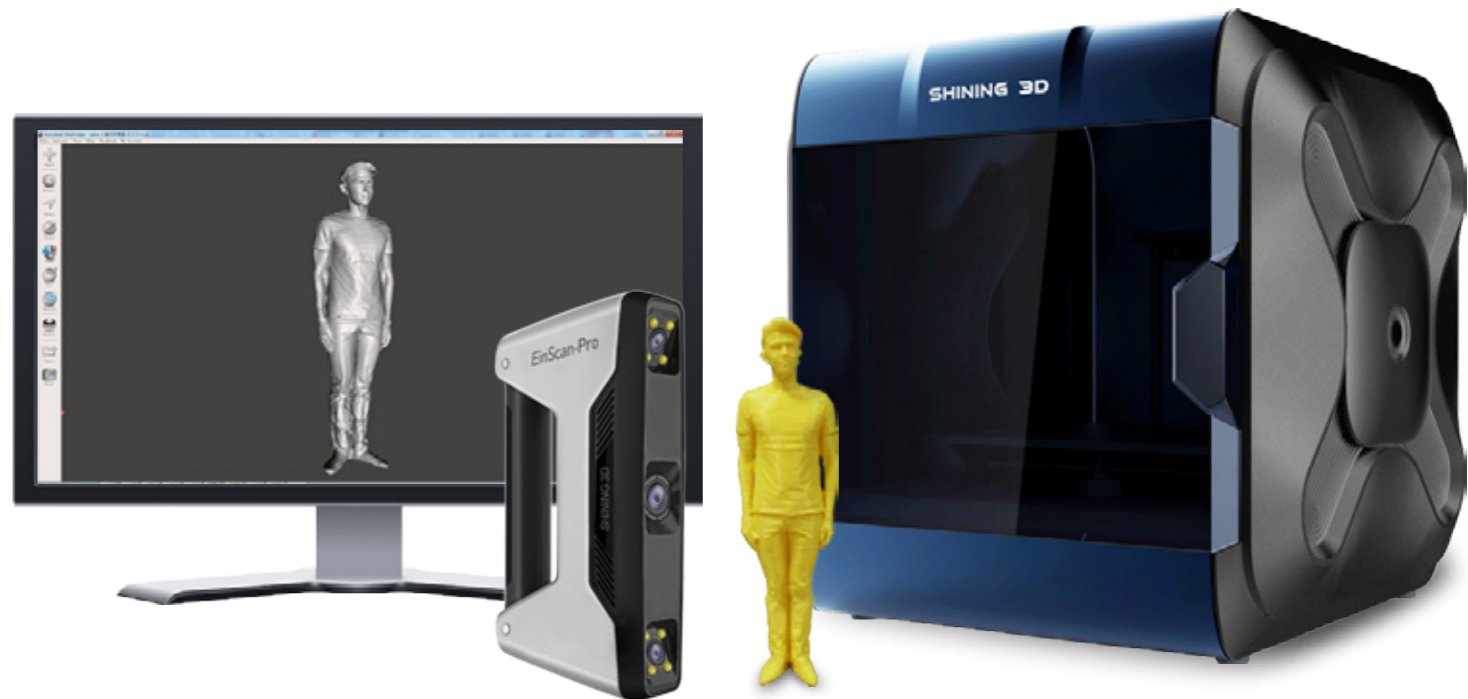
High compatibility

Data output can be used for 3D printing as well as designing directly. Data format: stl, obj, asc.



Cost-effective

Professional 3D scanner with high data quality and entry-level price. EinScan-Pro can be one representative



Specification

Scan Mode	Handheld HD scan	Handheld rapid scan	Auto scan	Free scan
Accuracy	0.1mm	0.3mm	Single scan accuracy: 0.05mm	Single scan accuracy: 0.05mm
Scan speed	15 frames/s	10 frames/s	Single scan: <2s	Single scan: <2s
Point distance	0.2mm-2mm	0.5mm-2mm	0.16mm	
Single scan range	210*150mm			
Light source	White light LED			
Part size range (recommended)	0.03m-4m	0.15m-4m	0.03m-0.15m	0.03m-4m
Align mode	Mark point align	Feature align	Turntable align	Compatible: mark point align , feature align, turntable align
Texture scan	No	Yes (texture scan camera and software module shall be bought)		
Outdoor operation	No (affected by strong light)			
Special scan object	--	Rich surface feature needed	--	--
	For transparent, reflective and dark object, please spray powder first before scanning			
Printable data output	Yes			
Data format	OBJ, STL, ASC, PLY			
Scan head weight	0.8kg			
System support	Win7, Win8, Win10 64bit			
Display card	NVIDIA GTX660 or higher , Display memory: >2G, Processor: I5 or higher, Memory Storage: 8G or more			



Basic Pack



Industrial Pack



Color Pack



Basic+Color+Industrial Pack



SHINING 3D®

Email: sales@shining3d.com

Tel: +86 571 82999050

www.shining3d.com www.einscan.com

Address: No. 1398, Xiangbin Road, Wenyan, Xiaoshan, Hangzhou, Zhejiang, China